

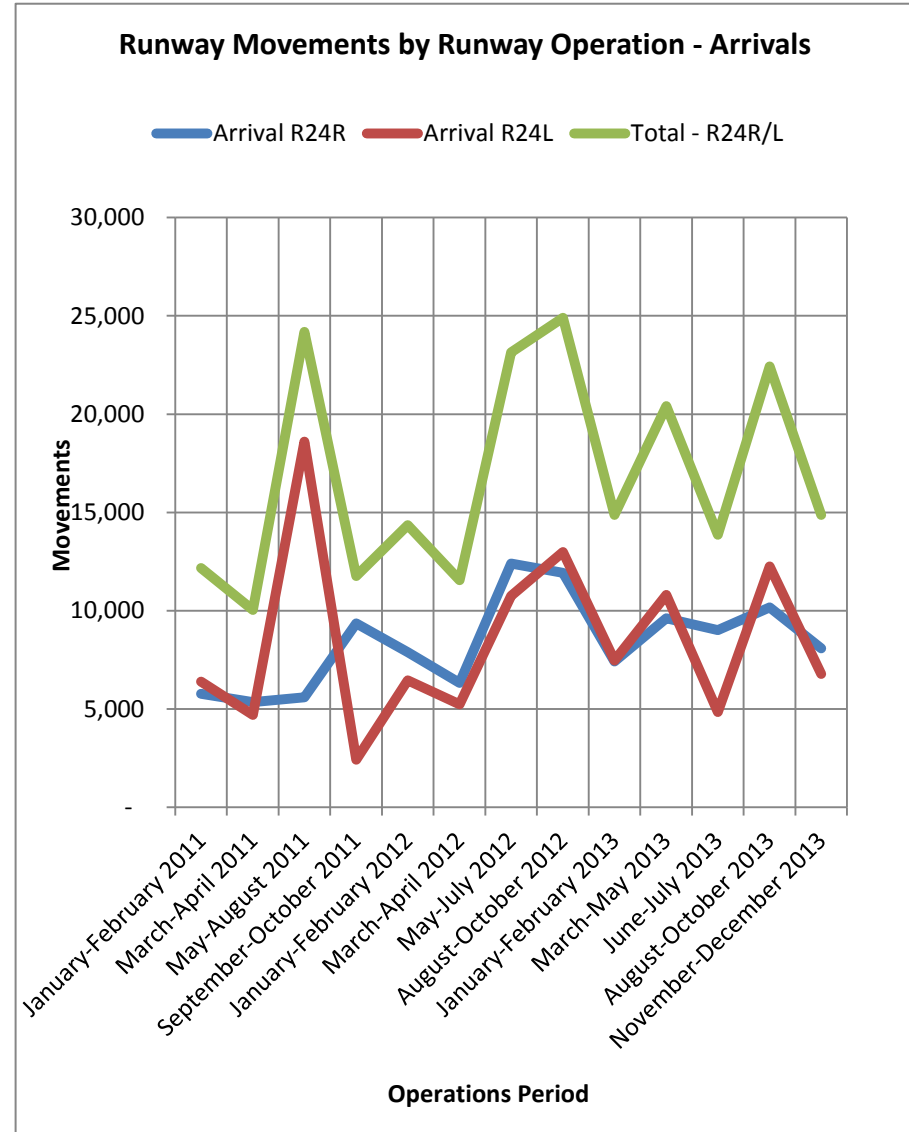
SOURCE

CENAC Advisory Committee Update

<http://www.torontopearson.com/en/cena>

Runway Movements by Runway Operation

| Operations period | Movements | | |
|---|---------------|---------------|----------------|
| | Arrival R24R | Arrival R24L | Total - R24R/L |
| January-February 2011 | 5,776 | 6,391 | 12,167 |
| March-April 2011 | 5,339 | 4,691 | 10,030 |
| May-August 2011 | 5,586 | 18,602 | 24,188 |
| September-October 2011 | 9,346 | 2,408 | 11,754 |
| January-February 2012 | 7,893 | 6,452 | 14,345 |
| March-April 2012 | 6,322 | 5,233 | 11,555 |
| May-July 2012 | 12,391 | 10,756 | 23,147 |
| August-October 2012 | 11,921 | 12,980 | 24,901 |
| January-February 2013 | 7,415 | 7,464 | 14,879 |
| March-May 2013 | 9,605 | 10,804 | 20,409 |
| June-July 2013 | 9,010 | 4,846 | 13,856 |
| August-October 2013 | 10,167 | 12,255 | 22,422 |
| November-December 2013 | 8,087 | 6,783 | 14,870 |
| Total 2013 movements | 44,284 | 42,152 | 86,436 |
| Total 2013 movements - January to October | 36,197 | 35,369 | 71,566 |
| 2013 Total movements - arrivals | | 215,647 | |
| All 2013 movements - Arrivals Percentage => R24R/R24L | | 40% | |



SOURCE

CENAC Advisory Committee Update

<http://www.torontopearson.com/en/cena>

Total Movements per Year

| Year | Arrival R24R | Arrival R24L | Total - R24R/L |
|------|--------------|--------------|----------------|
| 2011 | 35,181 | 37,001 | 72,182 |
| 2012 | 44,104 | 41,165 | 85,269 |
| 2013 | 44,284 | 42,152 | 86,436 |

